

*Canvas<sup>®</sup> RTMS, Resource Tracking and Management System, enables enterprises to locate, monitor and manage their mobile assets in a secure way using a simple Web browser.*

*The multi-layered architecture facilitates its use in GSM, CDMA, and next generation packet-data networks with complete end-to-end privacy control.*

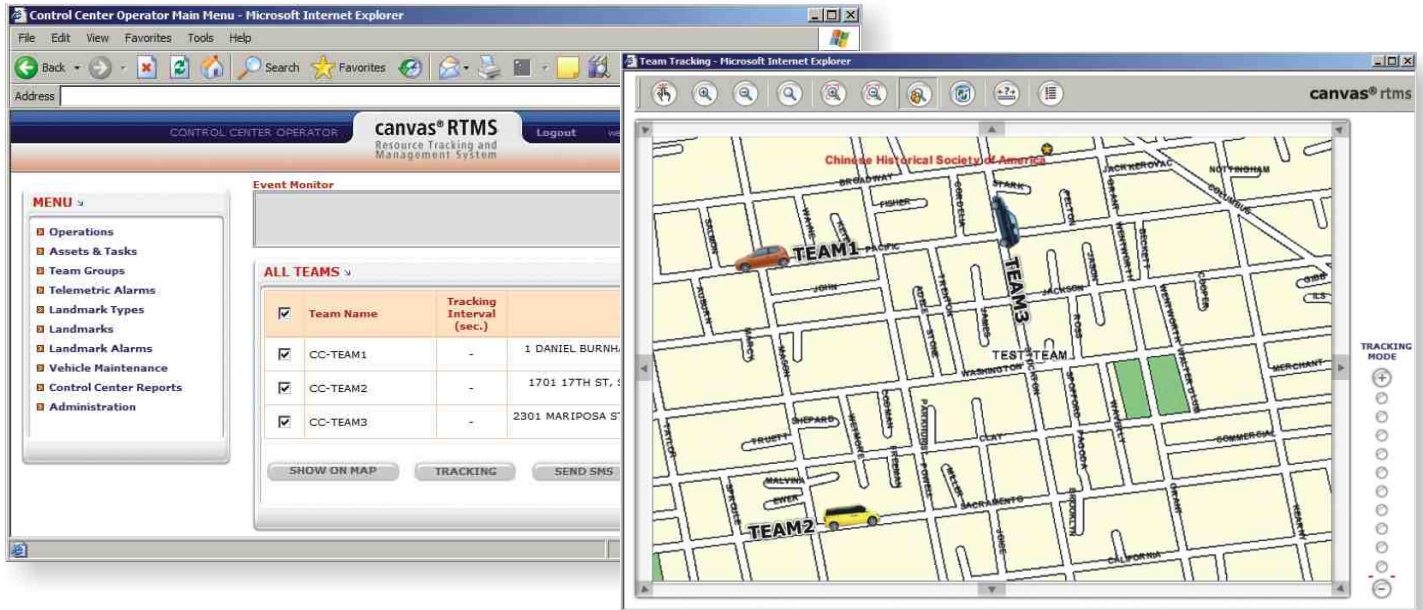
The Canvas brand covers multiple solutions with key components that are optimal for future growth in the evolving next generation networks (3G/IMS). Each Canvas product offers not only a point solution, but also re-usable building blocks that seamlessly integrate with other Canvas products as well as with Telenity partner solutions.

Canvas RTMS is a member of the Canvas Converged Value Added Services portfolio. It uniquely offers all the requirements for real-time tracking of vehicles and important assets, fleets and workgroups carrying mobile phones. It allows application service providers (ASP) to resell their services to multiple ASPs for advanced workforce and fleet management. With this customizable tracking application, network operators can achieve quicker return on their investment by offering new business models.

**This standalone application generates revenue from day one as users subscribe to track their assets everyday.** The application is designed from ground-up to support millions of real-time tracking transactions. It uses the power of Telenity's integrated Canvas platform designed to support high performance, high scalability and high availability through its distributed clustering technology.

**Advanced geographic map service** offers sophisticated map processing functionality utilizing industry standard Geographic Information Services (GIS) Map Server integration. The map features offer common capabilities such as panning, zooming, layer control and points of interest.

**Flexible resource management** features allow operators to define new workgroups, assign pre-defined tasks, define triggers/alarms, and mark important landmarks on a route. Operators can locate all workgroups and teams on a map in real-time, or can view previously traveled routes off-line. With simple point-and-click operation, operators can view existing assigned jobs and can dispatch new jobs via SMS.



### Product Overview

The Canvas RTMS communicates with any mobile phone and easily integrates with any in-vehicle mobile unit supporting GSM/GPRS or CDMA/1xRTT networks.

The web-based interface allows administration at multiple levels of operation with login, password and standard security protocols such as XML/HTTP/SSL. The ASP operator can provision only valid customers who assign their own mobile workgroups and assets for remote monitoring.

Canvas RTMS users will achieve enhanced productivity by real-time monitoring of their vehicles, bi-directional messaging with the field personnel, usage of location sensitive event triggers, obtaining detailed reports of vehicle activities, and analyzing the history of tracked routes.

### Feature Summary

- Data security through SSL and login restrictions
- Web based usage for all levels of access rights
- Integrated GIS Map Server with advanced zoom-in/out
- Real-time tracking of work force and assets
- Automatic playback of historical driven route
- Open Soap/XML interface for integration with external databases
- Alarm/trigger and landmark management
- Flexible mobile workgroup and task management
- Detailed billing records for charging and analysis
- Comprehensive statistics
- Built in interfaces for SMS messaging
- Integrated GPS server for positioning
- Support for both network and handset-based GPS
- Server side network connection to GPRS and

### Network Interfaces

- LIF MLP 3.0
- SS7 ISUP
- SMPP and UCP interfaces to SMSC

### Mobile Terminal Support

- Any in-vehicle device with GPS
- Mobile phone, GPS-enabled PC/PDA
- GSM/GPRS, CDMA/1xRTT

### Core Platform Technology

- IP, UDP
- Web services, XML
- Java SE, Java EE, JDBC, JMX

### Operating Environment

- SUN Solaris
- Red Hat Enterprise Linux

**Corporate Headquarters:** 755 Main Street, Building 7 Monroe, CT 06468, USA  
**EMEA Headquarters:** AHL Serbest Bolgesi, No. 472 Yesilkoy 34149 Istanbul, Turkey  
**APAC Headquarters:** 509, 5<sup>th</sup> Floor, World Trade Centre, Babar Road, Connaught Place, New Delhi 110001, India

Phone +1.203.445.2000  
 Phone +90.212.468.2100  
 Phone +91.11.4152.6886  
[info@telenity.com](mailto:info@telenity.com)  
[www.telenity.com](http://www.telenity.com)

The information contained herein is subject to change without notice. The only warranties for Telenity products and services are set forth in the expressed warranty statements accompanying such products and services. Nothing herein should be construed as constituting an additional warranty. Telenity shall not be liable for technical or editorial errors or omissions contained herein. Copyright © 2000-2008, Telenity®, Inc. All rights reserved. All denoted product names may be trademarks or registered trademarks of their respective owners.